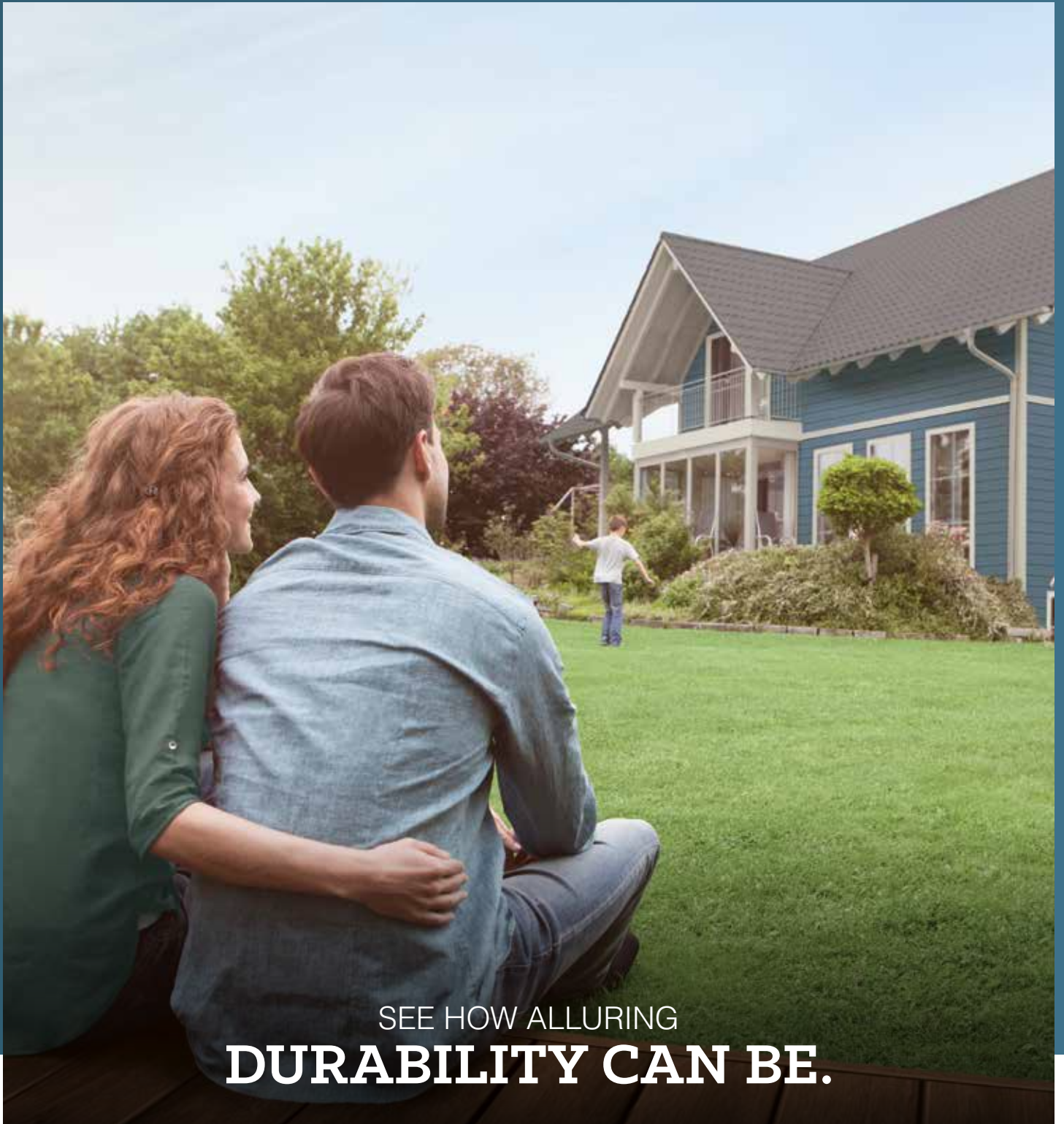


**CRANEBOARD®**  
**SOLID CORE SIDING®**



SEE HOW ALLURING  
**DURABILITY CAN BE.**

exterior®  
PORTFOLIO

**CRANEBOARD® SOLID CORE  
SIDING® IS INNOVATIVE  
THERMAL RESISTANCE AND  
LOW-MAINTENANCE  
TECHNOLOGY WRAPPED  
IN POWERFUL CURB APPEAL.  
ONE LOOK IS ALL YOU NEED TO  
FEEL ITS AUTHENTIC CEDAR  
GRAIN PRESENCE.**

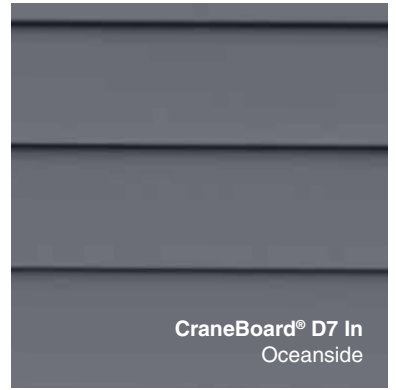


On Cover:  
CraneBoard® D7 in Regatta,  
Architectural Essentials™ Trim in Driftwood

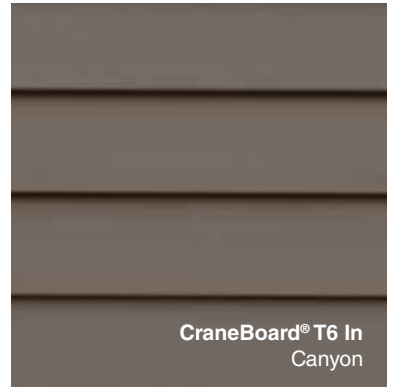




CraneBoard® Board & Batten in Driftwood,  
CraneBoard® D7 in Clay,  
Architectural Essentials™ Trim in Bone



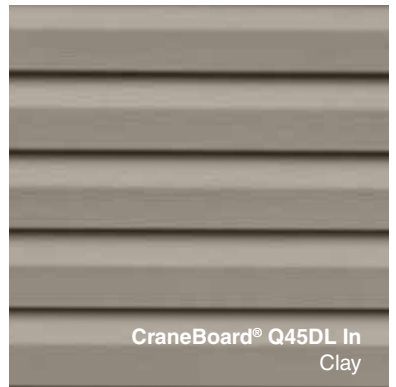
CraneBoard® D7 In  
Oceanside



CraneBoard® T6 In  
Canyon



CraneBoard® Board & Batten In  
Greystone



CraneBoard® Q45DL In  
Clay

CraneBoard® D7 Solid Core Siding® In Lighthouse Red



HARMONIZES WITH ANY STYLE.

# PROTECTS FROM ANY WEATHER.

From the curb, the authentic woodgrain of CraneBoard® Solid Core Siding® displays its gorgeous looks with any architectural style and virtually any accent or trim combination. And it has the industry-leading insulation technology to look after those looks.

CraneBoard manages moisture and insulates beautifully—better than fiber cement, wood, engineered wood or brick, as a matter of fact. Its durability proves itself year after year with no warping, buckling or sagging, and little demand in the way of maintenance.

- **No painting or scraping**
- **Won't warp, buckle or sag**
- **Reduces external noise up to 45%**
- **Surprisingly green**
- **Life of the Home Limited Warranty**
- **Available profiles: Double 7", Triple 6", Board & Batten, and Quad 4.5" Dutchlap**
- **Horizontal lap and Vertical Board & Batten profiles provide more exterior design possibilities**



CraneBoard® D6 In Pearl,  
Portsmouth™ D7 Cedar Shingles In Regatta,  
Architectural Essentials™ Trim In Pearl

# WITHSTAND THE ELEMENTS BEAUTIFULLY

Craneboard® Siding withstands the elements beautifully, boasting hurricane-force resistance and Chromatix® technology applied to SmartStyles™ Premium and SmartStyles™ Expressions shades. In other words, the opposite of fly-by-night installation.

- **Designed to withstand hurricane-force winds up to 160 mph**
- **Only manufacturer with Neopor®\* insulation: provides up to 19% better R-value than regular foam insulation**
- **Solid Core® insulation Smart Track™\*\* system uses moisture management ridges to improve water evacuation—a feature exclusive to CraneBoard®**
- **Built with TXL™ Lamination for superior bonding**
- **All colors available feature Chromatix® technology color protection**

---

## UNIFIED DESIGN: IT STARTS WITH COLOR

Exterior design revolves around how we choose and combine color. What's trending is as important as what speaks to you, and we help make sense of every aspect of it. Use our color combination tool to guide and to help. Gain valuable (and fun) perspective at [royalbuildingproducts.com/color-style/exterior-portfolio-color-combinations](http://royalbuildingproducts.com/color-style/exterior-portfolio-color-combinations)

Our color collections are created to fully express themselves from day one and all the days and years after that. Whether subtly or vibrantly, Craneboard siding pigments project personality while resisting fading and the elements.

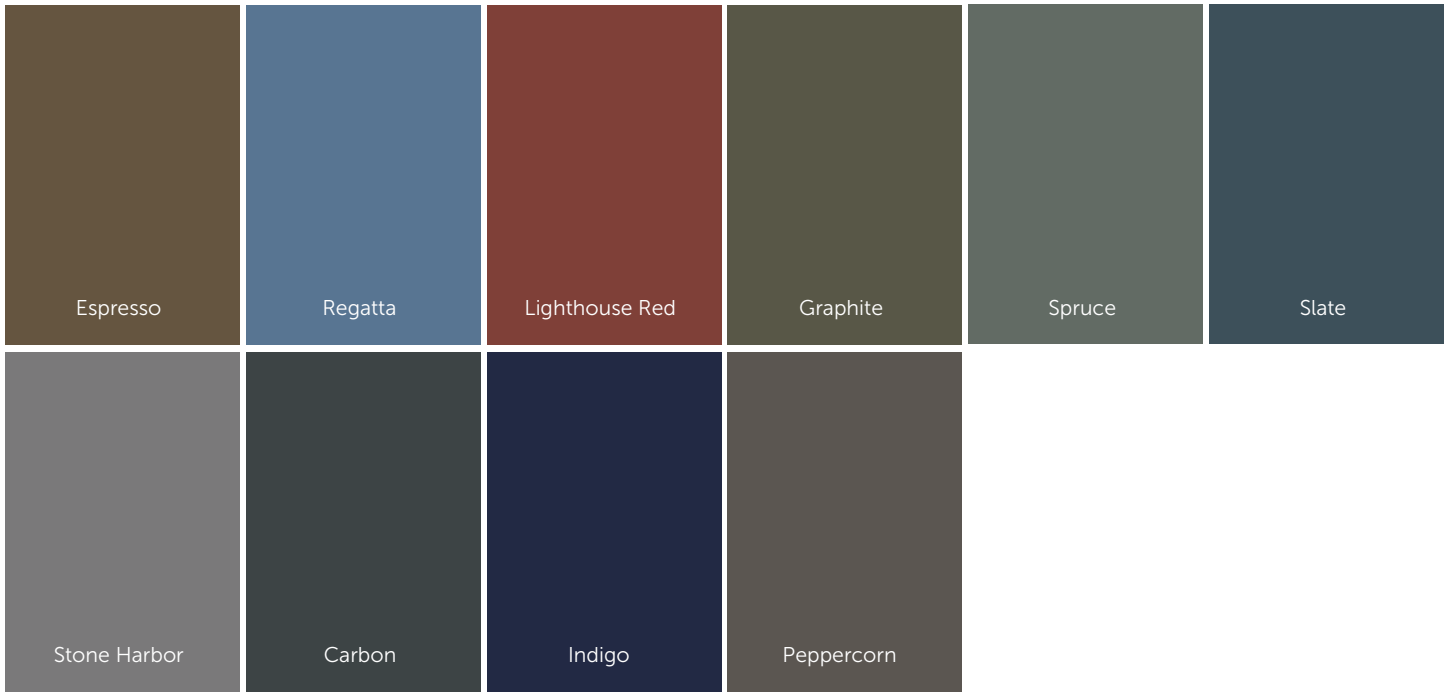
- **Our proprietary Chromatix® technology color protection effortlessly maintains the look you create in a challenging outdoor environment**
- **Infrared-reflecting pigments reduce heat buildup**
- **UV formulation with mineral-based pigments keep siding colors from fading**



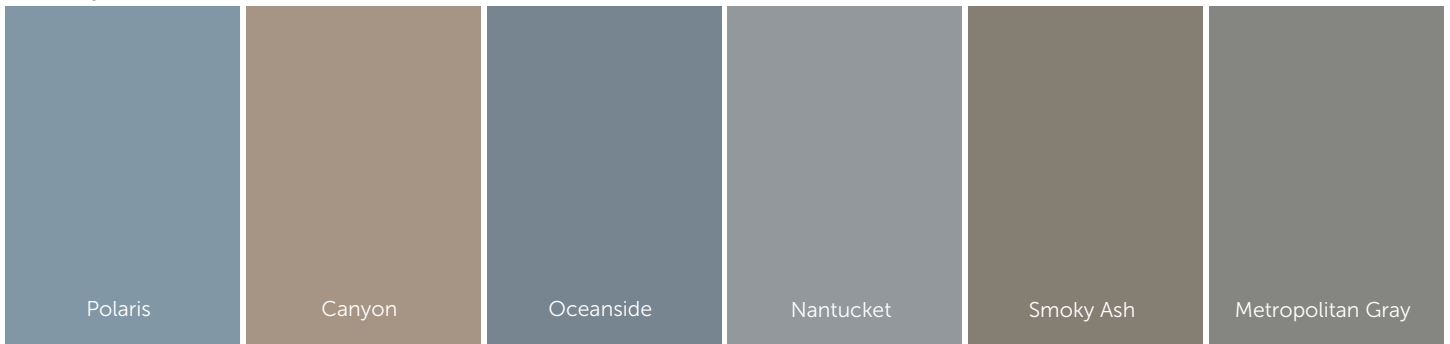
\*® = registered trademark of BASF SE

\*\*Smart Track™ is available in D7-12', D7-16', T6-12' and Q45DL

Smart Styles™ Expressions



Smart Styles™ Premium



Smart Styles™



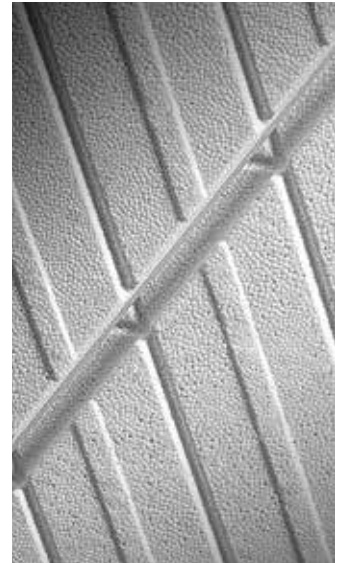
Carbon, Indigo, and Peppercorn available in Board & Batten only. Q4 and Q45DL are not available in Smart Styles™ Premium or Expressions Colors. T6 and D7 16' are not available in Smart Styles™ Premium or Expressions Colors (except for Regatta). Actual siding color may vary slightly from printed brochure.



# ENERGY EFFICIENCY IN **STANDOUT STYLES.**

Whether you seek to express a clean, contemporary look, amplify the elegance of your home style or convey something more traditional, CraneBoard® Solid Core Siding® gives you true design flexibility, while protecting your home from moisture, noise, weather, wear and tear.

- **Offers significantly more insulating power than fiber cement, wood, engineered wood or brick**
- **Neopor®\* insulation provides up to 19% better R-value than regular foam insulation, depending on the profile**
- **Built with TXL™ Lamination Technology for superior bonding**
- **Only Solid Core® insulation has the Smart Track™\*\* system with moisture management ridges**



\* Neopor® is a registered trademark of BASF SE

\*\* Smart Track™ is available in D7-12', D7-16', T6-12' and Q45DL

# A SUSTAINABLE **EXTERIOR PRESENCE.**

CraneBoard® Solid Core Siding® is as green as it is colorful and curb appealing. It's engineered to eliminate the need for painting or staining, and represents its environmental friendliness in many different ways—from production and manufacturing to transportation and installation. Our facilities recycle virtually all scrap materials during the manufacturing process and CraneBoard was designed so that when cut into, no hazardous materials are emitted during installation. From our facility to your home, our siding is a safe and sustainable option to choose.

- **Manufactured from recyclable and recycled materials**
- **Rivals natural cedar in overall green performance**
- **1/2 the environmental impact of fiber cement**

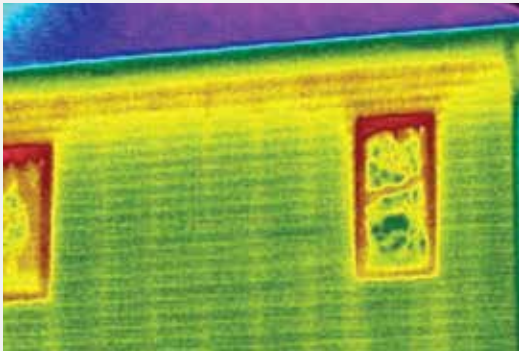


CERTIFICATION PROGRAM



## KEEP HEAT WHERE IT BELONGS: **INSIDE YOUR HOME.**

There's a phenomenon called "thermal bridging," in which heat and energy escape through the studs of your home's walls. CraneBoard® Solid Core Siding® is engineered to dramatically reduce it. The illustrations below give you a good picture of how this all works.



### WITHOUT CRANEBOARD

Framing studs are not insulated, which means heat escapes through them from your home. The yellow area shows how heat transfers through the studs.



### WITH CRANEBOARD

CraneBoard, shown in blue, cuts down on the energy you lose through the studs of your home's walls.

# ENJOY

## MAINTENANCE FREEDOM

Materials like wood, engineered wood and fiber cement require painting at some point in their life cycles. By contrast, every Craneboard® style and color requires very little upkeep and no painting.

- **Virtually maintenance free**
  - **Never needs painting**
  - **Won't flake, chip, rot or sag**
- 

# LONG-TERM

## PEACE OF MIND

Another point of differentiation: our Double Lifetime Warranty fully covers the first and second owner, while other vinyl manufacturers often prorate their warranties for the second owners. The innovation inherent in Craneboard, backed by our warranty, translates into more peace of mind and higher resale value.

- **Industry-leading Double Lifetime Warranty**
- **Strong resale value**

# ACHIEVE YOUR DREAM HOME.

Achieving the exterior that expresses your home the way you want takes time, thought and the right combination of siding, trim, accents, color and dimension. But the experience doesn't have to be painstaking or frustrating.

Use our website to find resources for guidance and inspiration, like these:

## **Dream Designer®**

Mix and match siding and trim combinations before you commit

## **Inspirational Photos**

See beautiful examples of home styles and colors

## **Color Design Guide**

Immerse yourself in valuable information and ideas

## **Free Samples**

Get a hands-on look at our siding







# BOUNDLESS™

Where some see boundaries, Westlake Royal Building Products™ sees opportunities to drive innovation, elevate design and deliver solutions that redefine the industry. Our comprehensive selection of products, materials and widely expressive color palettes and textures meet any home demand—inside and out, East Coast to West. Giving everyone the tools and technology to transform spaces into anything they want. This is our mission. And it's Boundless™.



SIDING & ACCESSORIES

TRIM & MOULDINGS

ROOFING

STONE

WINDOWS

OUTDOOR LIVING

